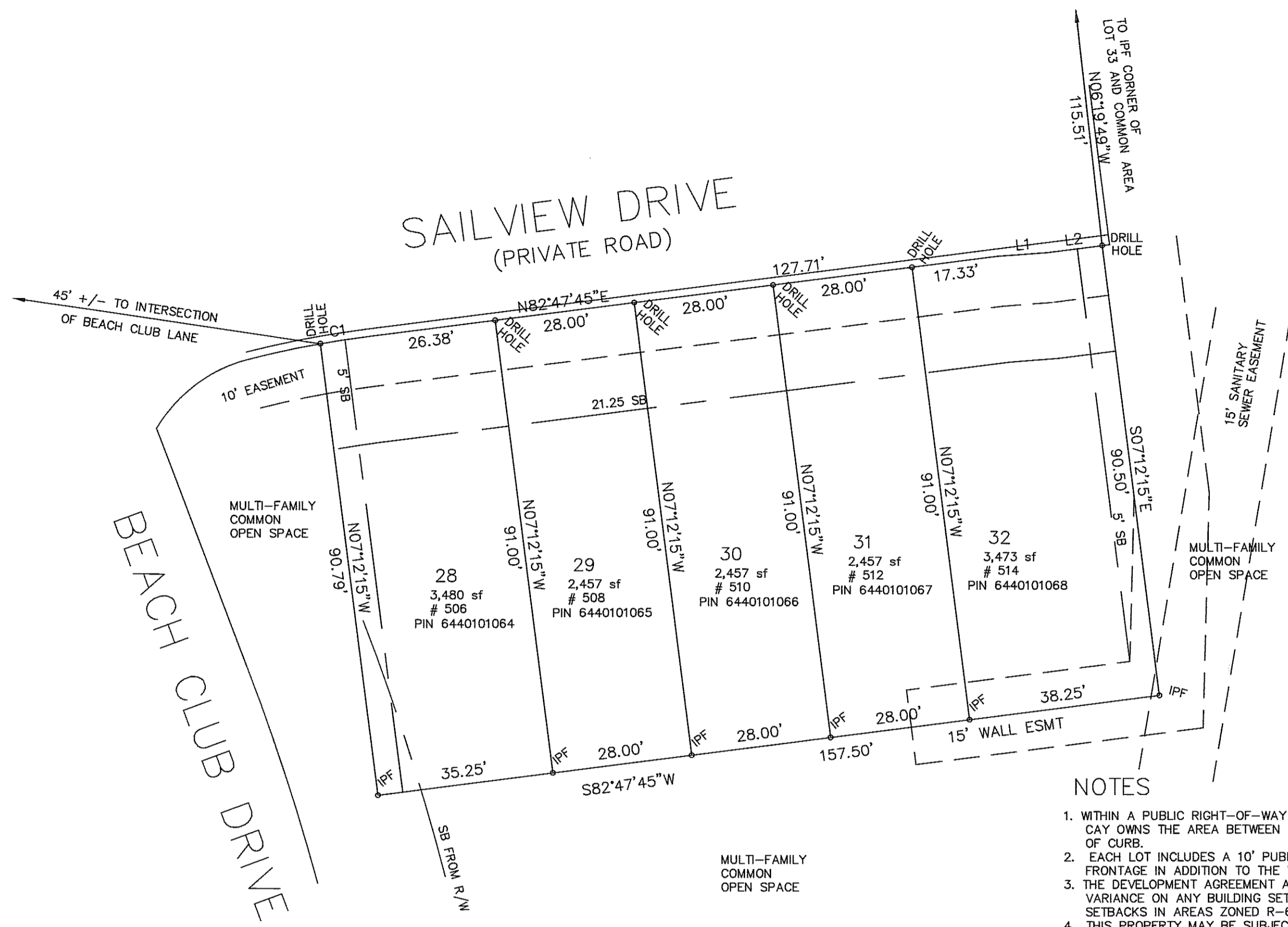
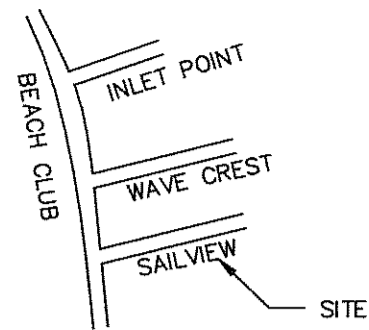


VICINITY MAP



201100149016
 Filed for Record in
 YORK COUNTY, SC
 DAVID HAMILTON, CLERK OF COURTS
 10-27-2011 At 11:55 am.
 LARGE PLAT 10.00
 Vol E115 Page 10



NOTES

1. WITHIN A PUBLIC RIGHT-OF-WAY OR STREETSCAPE, THE CITY OF TEGA CAY OWNS THE AREA BETWEEN THE BACK OF CURB AND THE BACK OF CURB.
2. EACH LOT INCLUDES A 10' PUBLIC UTILITY EASEMENT ALONG THE STREET FRONTAGE IN ADDITION TO THE WIDTH OF PUBLIC RIGHT-OF-WAY.
3. THE DEVELOPMENT AGREEMENT AND AMENDMENTS THERETO ALLOW A 15% VARIANCE ON ANY BUILDING SETBACK REQUIREMENT EXCEPT SIDE SETBACKS IN AREAS ZONED R-6
4. THIS PROPERTY MAY BE SUBJECT TO ADDITIONAL RESTRICTIONS, EASEMENTS, RIGHTS OF WAY, UTILITIES, COVENANTS AND RESTRICTIONS OF RECORD OR IMPLIED.
5. THIS PROPERTY IS NOT LOCATED IN A SPECIAL FLOOD HAZARD AREA AS DETERMINED BY THE DEPARTMENT OF HOUSING AND URBAN DEVELOPMENT. REFERENCE COMMUNITY PANEL NUMBER 450193 0130 D

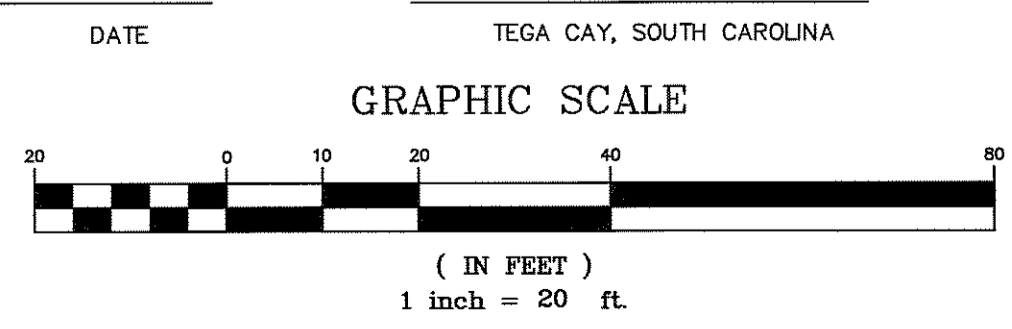
I HEREBY CERTIFY THAT THE SUBDIVISION PLAT SHOWN HEREON HAS BEEN FOUND TO COMPLY WITH SUBDIVISION REGULATIONS OF THE CITY OF TEGA CAY, SOUTH CAROLINA AND THAT THIS PLAT HAS BEEN APPROVED BY THE CITY COUNCIL FOR RECORDING IN THE OFFICE OF THE CLERK OF COURT OF YOURK COUNTY, SOUTH CAROLINA.

Dennis P. Propper
 CITY MANAGER

LINE	LENGTH	BEARING
L1		N85°39'28"E
L2	10.92	N82°47'45"E

CURVE	RADIUS	LENGTH	TANGENT	CHORD	BEARING	DELTA
C1	188.00	8.87	4.44	8.87	S81°26'23"W	2°42'15"

"I hereby state that to best of my knowledge, information, and belief, the survey shown herein was made in accordance with the requirements of the Standards Manual for the Practice of Surveying in South Carolina, and meets or exceeds the requirements for a Class A survey as specified therein.



LEGEND

P.D.E. PUBLIC DRAINAGE EASEMENT	• NRB	NEW REBAR
• IPS IRON PIPE SET	• IPF IRON PIPE FOUND	
OHPL OVERHEAD POWER LINE	• ERB-BC ERB AT BC	
• CM CONCRETE MONUMENT	— FENCE LINE	
• PPPOLE POWER POLE	• LPPOLE LIGHT POLE	
• PB TRANSFORMER	• MH MANHOLE	
• PHONE TELEPHONE BOX	• CATV CABLE TV BOX	

SIGNED
 STEPHEN B. MULLINS S.C.R.L.S. 30786
 DATE 24 Day of OCTOBER, 2011

STEPHEN B. MULLINS AND ASSOCIATES, P.A.
 REGISTERED LAND SURVEYORS
 224 WESTINGHOUSE BLVD., SUITE 604
 CHARLOTTE, N.C. 28273-6248
 (704)583-1800

FINAL PLAT REVISION
 LOTS 28-32 LAKE SHORE ON LAKE WYLIE
 POD MF-1 BEACH CLUB TOWN HOMES

TEGA CAY
 YORK COUNTY, SOUTH CAROLINA
 OWNER BY: NVR, INC. DEED BOOK 13221 PAGE 266 PLAT BOOK E73-PAGE 2-3

DATE: OCT. 24 2011
 DRAWN BY: SM
 DESIGN BY:
 CHECKED BY:

11056